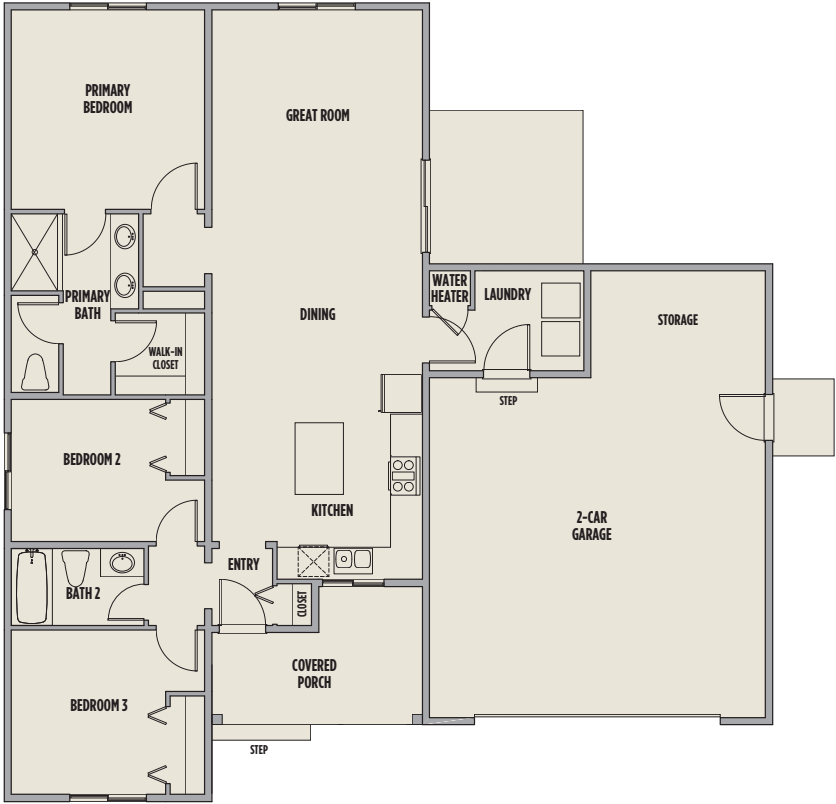




PONDEROSA

Approx. 1,339 Sq. Ft.
3 Bedrooms | 2 Baths | 2-Car Garage



406 551 3629
Sarah Gebhardt, Real Estate Professional
SarahUGMT@gmail.com

WILLIAMSHOMES.com



All information provided herein, including floorplans, renderings, square footages, home features, site plan, and community amenities, is Preliminary and subject to change without prior notice or obligation. Floorplans and renderings are artists' conception and not necessarily to exact scale. Copyright © 2022 Williams Homes. All rights reserved. State of Montana Board of Realty License #RRE-BRO-LIC-79203. Equal Housing Opportunity.





SPRUCE

Approx. 1,418 Sq. Ft.
3 Bedrooms | 2 Baths | 2-Car Garage



406 551 3629
Sarah Gebhardt, Real Estate Professional
SarahUGMT@gmail.com

WILLIAMSHOMES.com



All information provided herein, including floorplans, renderings, square footages, home features, site plan, and community amenities, is Preliminary and subject to change without prior notice or obligation. Floorplans and renderings are artists' conception and not necessarily to exact scale. Copyright © 2022 Williams Homes. All rights reserved. State of Montana Board of Realty License #RRE-BRO-LIC-79203. Equal Housing Opportunity.





JUNIPER

Approx. 1,480 Sq. Ft.
4 Bedrooms | 2 Baths | 2-Car Garage



406 551 3629
Sarah Gebhardt, Real Estate Professional
SarahUGMT@gmail.com

WILLIAMSHOMES.com



All information provided herein, including floorplans, renderings, square footages, home features, site plan, and community amenities, is Preliminary and subject to change without prior notice or obligation. Floorplans and renderings are artists' conception and not necessarily to exact scale. Copyright © 2022 Williams Homes. All rights reserved. State of Montana Board of Realty License #RRE-BRO-LIC-79203. Equal Housing Opportunity.

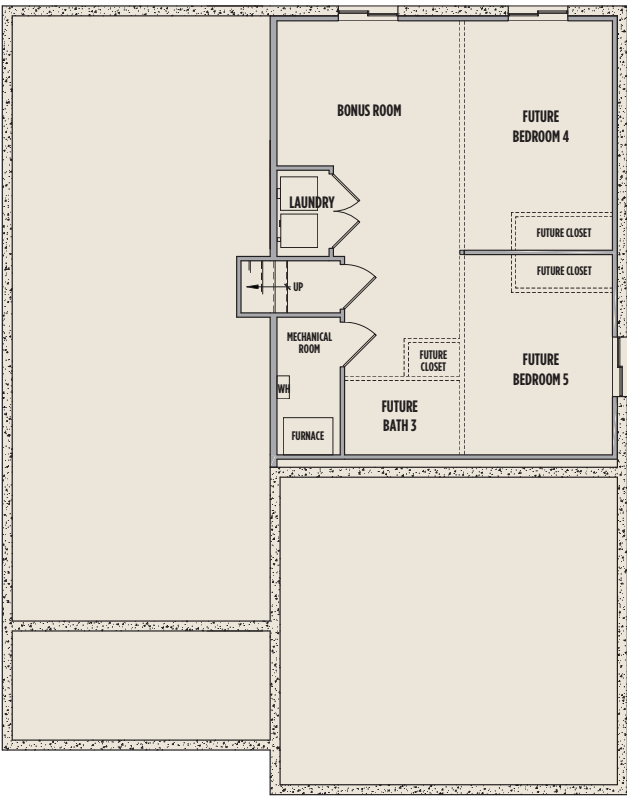




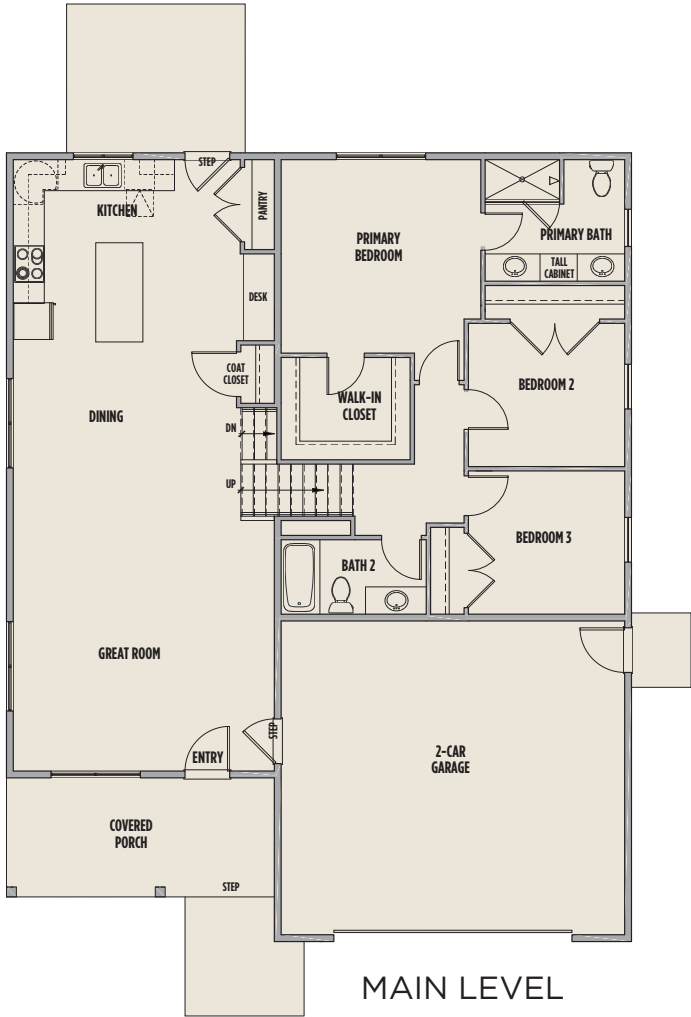
CEDAR



Approx. 2,239 Sq. Ft.
Main Level 1,516 Sq Ft | Lower Level 723 Sq Ft
3 Bedrooms | 2 Baths | 2-Car Garage



BASEMENT



MAIN LEVEL



406 551 3629
Sarah Gebhardt, Real Estate Professional
SarahUGMT@gmail.com

WILLIAMSHOMES.com



All information provided herein, including floorplans, renderings, square footages, home features, site plan, and community amenities, is Preliminary and subject to change without prior notice or obligation. Floorplans and renderings are artists' conception and not necessarily to exact scale. Copyright © 2022 Williams Homes. All rights reserved. State of Montana Board of Realty License #RRE-BRO-LIC-79203. Equal Housing Opportunity.





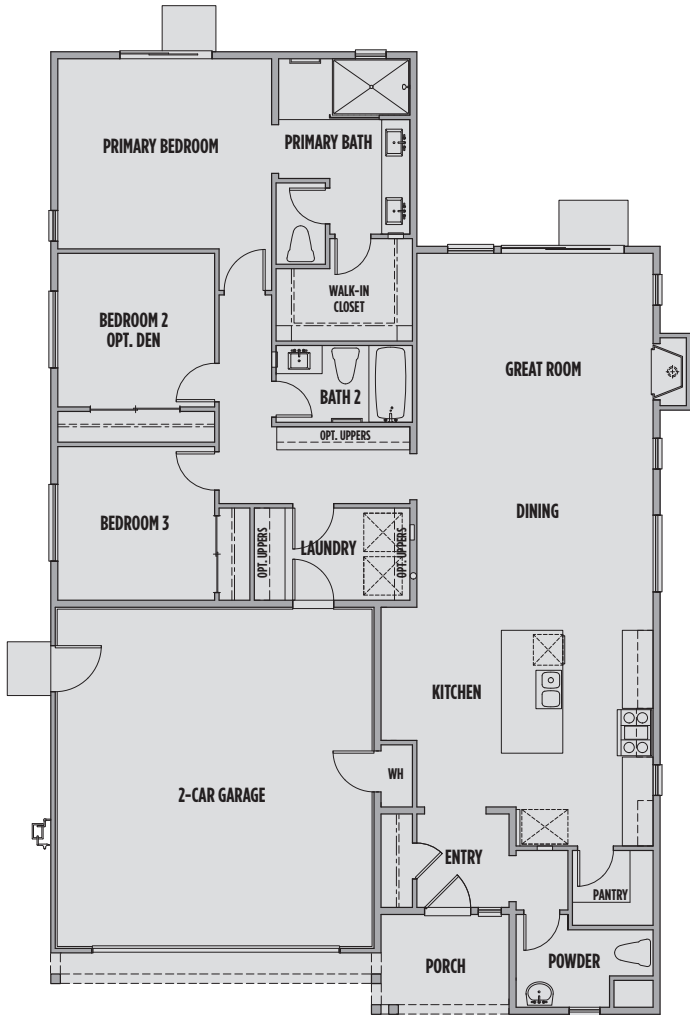
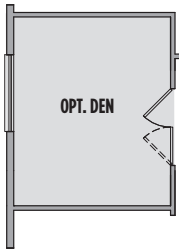
1A



1B

QUARTZ

Approx. 1,680 - 1,685 Sq. Ft.
3 Bedrooms | 2.5 Baths | 2-Car Garage



406 551 3629
Sarah Gebhardt, Real Estate Professional
SarahUGMT@gmail.com

WILLIAMSHOMES.com



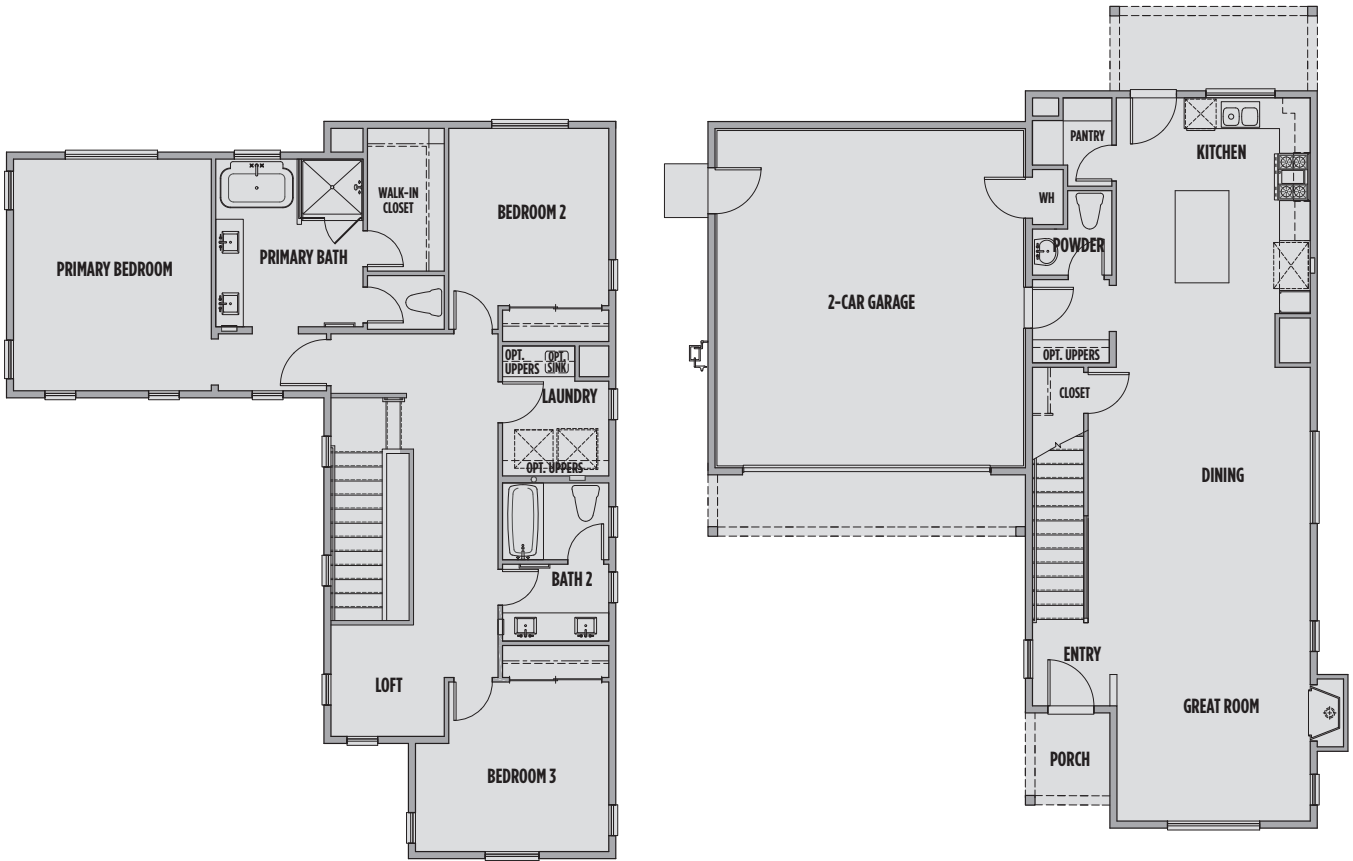
All information provided herein, including floorplans, renderings, square footages, home features, site plan, and community amenities, is Preliminary and subject to change without prior notice or obligation. Floorplans and renderings are artists' conception and not necessarily to exact scale. Copyright © 2022 Williams Homes. All rights reserved. State of Montana Board of Realty License #RRE-BRO-LIC-79203. Equal Housing Opportunity.





GARNET

Approx. 1,999 - 2,015 Sq. Ft.
3 Bedrooms | 2.5 Baths | 2-Car Garage



406 551 3629

Sarah Gebhardt, Real Estate Professional
SarahUGMT@gmail.com

WILLIAMSHOMES.com



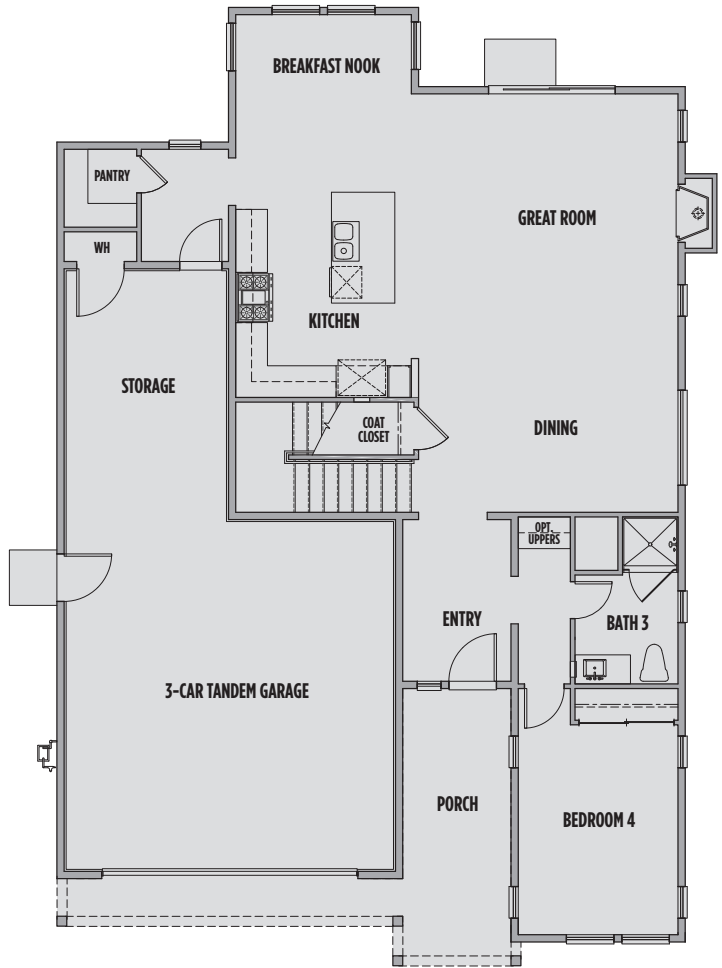
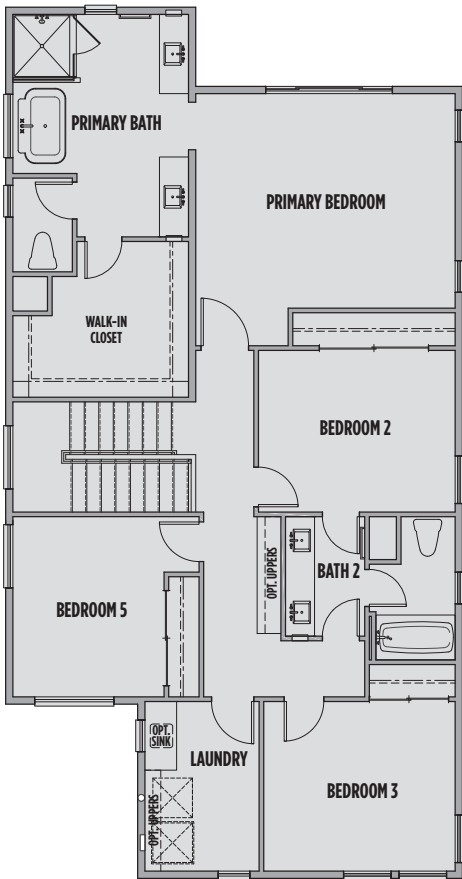
All information provided herein, including floorplans, renderings, square footages, home features, site plan, and community amenities, is Preliminary and subject to change without prior notice or obligation. Floorplans and renderings are artists' conception and not necessarily to exact scale. Copyright © 2022 Williams Homes. All rights reserved. State of Montana Board of Realty License #RRE-BRO-LIC-79203. Equal Housing Opportunity.





SAPPHIRE

Approx. 2,647 - 2,665 Sq. Ft.
5 Bedrooms | 3 Baths | 3-Car Tandem Garage



406 551 3629

Sarah Gebhardt, Real Estate Professional
SarahUGMT@gmail.com



WILLIAMSHOMES.com



All information provided herein, including floorplans, renderings, square footages, home features, site plan, and community amenities, is Preliminary and subject to change without prior notice or obligation. Floorplans and renderings are artists' conception and not necessarily to exact scale. Copyright © 2022 Williams Homes. All rights reserved. State of Montana Board of Realty License #RRE-BRO-LIC-79203. Equal Housing Opportunity.

